



STATEMENT OF QUALIFICATIONS FOR
PROFESSIONAL ARCHITECTURAL &
ENGINEERING SERVICES

NEW ELDER CARE FACILITY

GOSHEN CARE CENTER
TORRINGTON, WY



October 11, 2018

Board of Directors
Goshen Care Center Joint Powers Board
Goshen County Economic Development Corporation
110 West 22nd Avenue
Torrington, WY 82240

RE: EVERGREEN PLAZA ASSISTED LIVING FACILITY
TORRINGTON, WY

To Whom It May Concern:

We are privileged to have the opportunity to submit the following statement of qualifications for professional architectural and engineering services and to indicate our interest in assisting the Goshen Care Center Joint Powers Board with its goal to create a new assisted living on its campus.

Why Choose the WAI Continuum?

The benefits our team will bring to your project include:

- **Design for Aging Experts.** Over 37 years of firm specialization in the senior housing and healthcare industry with planning and design services for over 550 senior projects throughout the country, including an extensive list of assisted living facilities for both stand alone facilities and new components expanding the continuum of care on existing campuses.
- **Proven Process Ensures Accountability.** Our comprehensive system for program development ensures Goshen's vision and project goals are fully understood and that design development holds to the approved program, schedule and budget through completion.
- **Comprehensive Team.** We are able to offer a complete package of architectural design and engineering services. Where consultants are necessary, we have chosen equally strong firms with whom we have worked on numerous similar projects, nationally and over several decades.

We thank you for consideration of our design services and we welcome the opportunity to speak with you in further detail about the goals you have identified for this project and how we can get bring those ideas to a tangible result.

Sincerest Regards,
WAI CONTINUUM

A handwritten signature in blue ink that reads "Nathan Anderson".

Nathan Anderson, PLS
Vice President
nanderson@lja-1.com
(701) 551-2161

an  LJA company

381 East Kellogg Boulevard
Saint Paul, MN 55101
651-227-0644
651-223-5092 Fax
www.waicontinuum.com

ARCHITECT - ENGINEER QUALIFICATIONS

PART I - CONTRACT-SPECIFIC QUALIFICATIONS

A. CONTRACT INFORMATION

1. TITLE AND LOCATION *(City and State)*

Goshen Care Center / New Elder Care Facility (Torrington, WY)

2. PUBLIC NOTICE DATE

September 19, 2018

3. SOLICITATION OR PROJECT NUMBER

B. ARCHITECT-ENGINEER POINT OF CONTACT

4. NAME AND TITLE

Sean Bujold, AIA - Architectural Department Lead

5. NAME OF FIRM

WAI Continuum (an LJA Company)

6. TELEPHONE NUMBER

(651) 366-6336

7. FAX NUMBER

(651) 223-5092

8. E-MAIL ADDRESS

seanb@waicontinuum.com

C. PROPOSED TEAM

(Complete this section for the prime contractor and all key subcontractors.)

	(Check)			9. FIRM NAME	10. ADDRESS	11. ROLE IN THIS CONTRACT
	PRIME	J-V PARTNER	SUBCON-TRACTOR			
a.	X			WAI Continuum <input checked="" type="checkbox"/> CHECK IF BRANCH OFFICE	381 East Kellogg Boulevard Saint Paul, MN 55101 (651) 227-0644	Architectural Design, Project Management
b.		X		Lightowler Johnson & Associates, Inc. (LJA) <input type="checkbox"/> CHECK IF BRANCH OFFICE	500 Main Avenue Fargo, ND 58103 (701) 293-1350	WAI Parent Company Civil Engineering, if required
c.			X	Steen Engineering, Inc. <input type="checkbox"/> CHECK IF BRANCH OFFICE	5430 Douglas Drive North Crystal, MN 55429 (763) 585-6742	Mechanical Engineering Electrical Engineering
d.			X	Larson Engineering, Inc. <input checked="" type="checkbox"/> CHECK IF BRANCH OFFICE	3524 Labore Road White Bear Lake, MN 55110 (651) 481-9120	Structural Engineering
e.				<input type="checkbox"/> CHECK IF BRANCH OFFICE		
f.				<input type="checkbox"/> CHECK IF BRANCH OFFICE		

D. ORGANIZATIONAL CHART OF PROPOSED TEAM

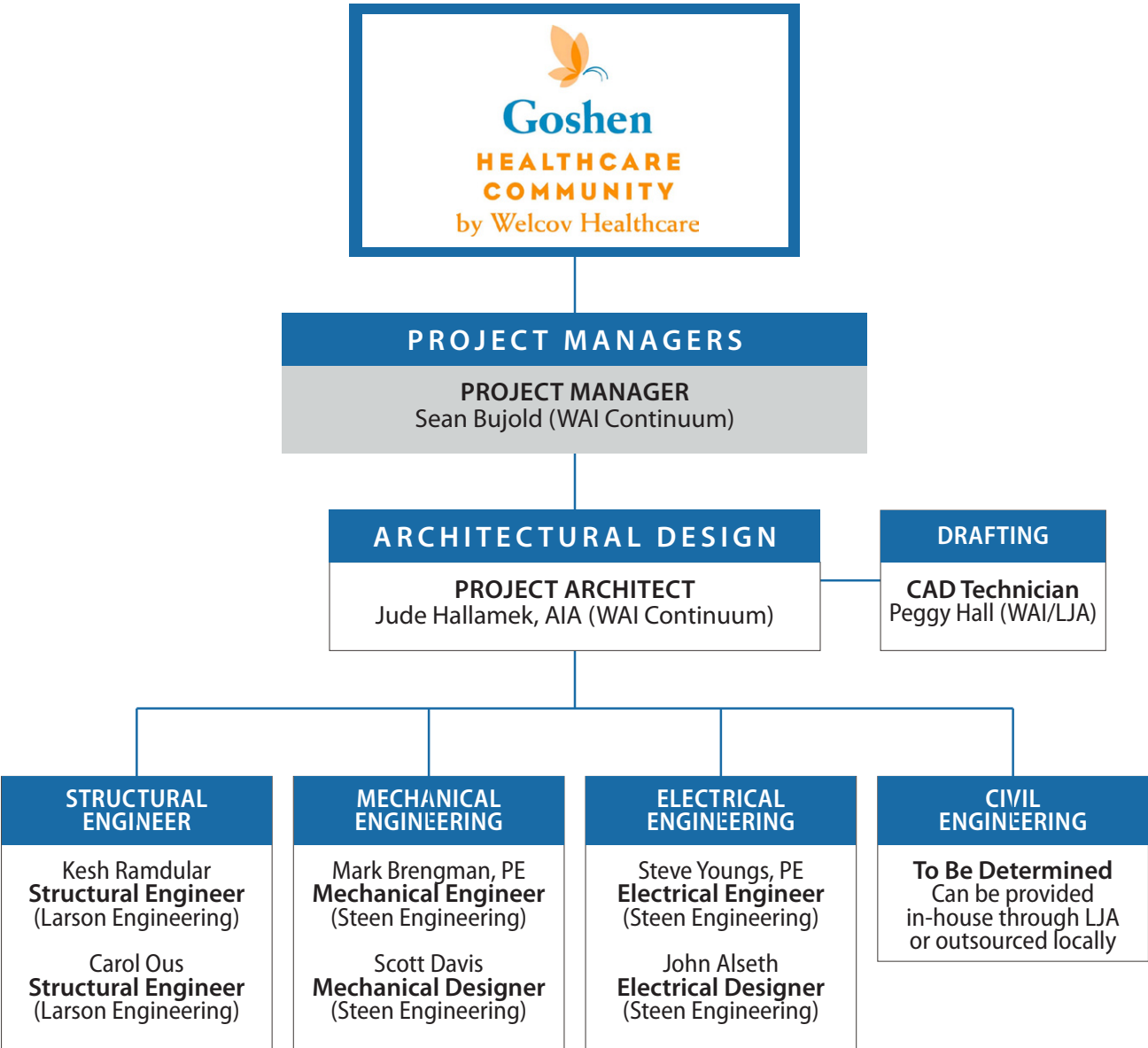
(Attached)

D. ORGANIZATIONAL CHART OF PROPOSED TEAM

TEAM ORGANIZATION: The Right People Make All the Difference.

The following organization represents an established and cohesive network of team players, equally strong but complementing firms with whom WAI Continuum has collaborated on numerous past projects over many decades.

The focal point of our proposed team and its approach will be the relationship between Goshen Care Center, the Project Manager and the Project Architect. The Project Architect will work with you to ensure that your program, design goals and project objectives are explored, identified and understood, while the Project Manager will lead the team and coordinate the activities of all participants involved on this project.



E. RESUMES OF KEY PERSONNEL PROPOSED FOR THIS CONTRACT

(Complete one Section E for each key person.)

12. NAME Sean Bujold	13. ROLE IN THIS CONTRACT Project Manager	14. YEARS EXPERIENCE	
		a. TOTAL 33	b. WITH CURRENT FIRM 1
15. FIRM NAME AND LOCATION <i>(City and State)</i> WAI Continuum (Saint Paul, MN)			
16. EDUCATION <i>(Degree and Specialization)</i> Masters of Architecture - University of Minnesota Bachelor of Arts, Architecture - University of Minnesota		17. CURRENT PROFESSIONAL REGISTRATION <i>(State and Discipline)</i> NCARB, plus Professional Registered Architect in: Wyoming, Minnesota, Wisconsin, Utah, Minnesota	
18. OTHER PROFESSIONAL QUALIFICATIONS <i>(Publications, Organizations, Training, Awards, etc.)</i>			

19. RELEVANT PROJECTS			
	(1) TITLE AND LOCATION <i>(City and State)</i>	(2) YEAR COMPLETED	
		PROFESSIONAL SERVICES	CONSTRUCTION <i>(If applicable)</i>
a.	WI Department of Veterans Affairs (Chippewa Falls, WI)	2009	
	(3) BRIEF DESCRIPTION <i>(Brief scope, size, cost, etc.)</i> AND SPECIFIC ROLE <input type="checkbox"/> Check if project performed with current firm Served as an architect and wrote the program / space planning for design of a 72-bed skilled care facility including narrative, relationship diagrams, room data sheets, proposed schedule and budget (\$20M).		
b.	Northfield Retirement Home (Northfield, MN)	1998	1999
	(3) BRIEF DESCRIPTION <i>(Brief scope, size, cost, etc.)</i> AND SPECIFIC ROLE <input type="checkbox"/> Check if project performed with current firm Served as an architectural design consultant for the renovation and addition of a senior housing facility that included 28 congregate housing units and 10 assisted living units for a \$2.7M renovation.		
c.	Anoka Metro Regional Treatment Center (Anoka, MN)	Multiple	1991 - 1998
	(3) BRIEF DESCRIPTION <i>(Brief scope, size, cost, etc.)</i> AND SPECIFIC ROLE <input type="checkbox"/> Check if project performed with current firm Served as project manager for a new 300 bed, \$45M psychiatric state hospital project. After legislators cut budget back to \$30M, lead team through design revisions, including work with local consultants, through design changes to bring project to completion.		
d.	Wray Community District Hospital (Wray, CO)	1993	1995
	(3) BRIEF DESCRIPTION <i>(Brief scope, size, cost, etc.)</i> AND SPECIFIC ROLE <input type="checkbox"/> Check if project performed with current firm Replacement hospital for full service 15 bed Level IV trauma center with 2 OR suites, radiology, 2 LDRP, ER, SCU/PACU, laboratory, clinic space. Lead architectural design through construction administration and served as job superintendent where necessary during construction.		
e.	Saint Anthony Regional Hospital (Carroll, IA)	1992	1995
	(3) BRIEF DESCRIPTION <i>(Brief scope, size, cost, etc.)</i> AND SPECIFIC ROLE <input type="checkbox"/> Check if project performed with current firm Project manager for a multi-phase construction project for a hospital, including additions and remodeling to outpatient services, ER, OB, nuclear medicine, radiology, lab, dietary, physical and occupational therapy, central supply. Projects ranged from \$3-4M each.		

E. RESUMES OF KEY PERSONNEL PROPOSED FOR THIS CONTRACT

(Complete one Section E for each key person.)

12. NAME Jude Hallamek, AIA	13. ROLE IN THIS CONTRACT Project Architect	14. YEARS EXPERIENCE	
		a. TOTAL 18	b. WITH CURRENT FIRM 3
15. FIRM NAME AND LOCATION <i>(City and State)</i> WAI Continuum (Saint Paul, MN)			
16. EDUCATION <i>(Degree and Specialization)</i> Masters of Architecture - University of Minnesota Bachelor of Arts in Architecture - University of Minnesota		17. CURRENT PROFESSIONAL REGISTRATION <i>(State and Discipline)</i> Registered Architect in Minnesota, Texas, Arizona, North Dakota, South Dakota NCARB Certified	
18. OTHER PROFESSIONAL QUALIFICATIONS <i>(Publications, Organizations, Training, Awards, etc.)</i> American Institute of Architects			

19. RELEVANT PROJECTS			
	(1) TITLE AND LOCATION <i>(City and State)</i>	(2) YEAR COMPLETED	
		PROFESSIONAL SERVICES	CONSTRUCTION <i>(If applicable)</i>
a.	Harrison Bay Senior Living (Mound, MN)	2017	2018
	(3) BRIEF DESCRIPTION <i>(Brief scope, size, cost, etc.)</i> AND SPECIFIC ROLE Project Manager & Architect for a new \$11M senior living facility featuring 52 assisted living units and 20 memory care assisted living units.		
b.	Mount Olivet Careview Home (Minneapolis, MN)	2016	2018
	(3) BRIEF DESCRIPTION <i>(Brief scope, size, cost, etc.)</i> AND SPECIFIC ROLE Project Manager & Architect for \$22.4M renovation and 5 story addition to an urban senior living facility with 153 beds to shift for a focus on privacy, rehabilitative care, memory care and therapy.		
c.	Fountain Springs Senior Living (Rapid City, SD)	2015	2017
	(3) BRIEF DESCRIPTION <i>(Brief scope, size, cost, etc.)</i> AND SPECIFIC ROLE Project Architect for \$1.9M renovation of an existing 90-bed senior care facility including renovation to expand rehab care with expanded therapy, new bistro, pub and activity spaces, dining room and lounge spaces to enhance quality of life.		
d.	Primrose Retirement Villages (Multiple in AR, MI, WI)	2016	2017
	(3) BRIEF DESCRIPTION <i>(Brief scope, size, cost, etc.)</i> AND SPECIFIC ROLE Project Architect for new prototype design and site adaptation for 3 campuses that include \$12-17M senior housing facilities that included 70-95 units of independent, assisted and memory care assisted living for seniors. Sites also included senior rental villas and a clubhouse.		
e.	Welcov - Firesteel (Mitchell, MN)	2016	2017
	(3) BRIEF DESCRIPTION <i>(Brief scope, size, cost, etc.)</i> AND SPECIFIC ROLE Project Architect for \$8M renovation and addition to a 148 bed senior care facility. The new addition of 20 beds expanded transitional care, including a private recovery suite for up to 50 people. New amenities to engage residents include a theatre, internet cafe, lounge, bistro and chapel.		

E. RESUMES OF KEY PERSONNEL PROPOSED FOR THIS CONTRACT

(Complete one Section E for each key person.)

12. NAME Mark Brengman, PE	13. ROLE IN THIS CONTRACT Mechanical Engineer	14. YEARS EXPERIENCE	
		a. TOTAL 26	b. WITH CURRENT FIRM 23
15. FIRM NAME AND LOCATION <i>(City and State)</i> Steen Engineering (Crystal, MN)			
16. EDUCATION <i>(Degree and Specialization)</i> Bachelor of Mechanical Engineering (University of Minnesota) Master of Business Administration (University of St. Thomas)		17. CURRENT PROFESSIONAL REGISTRATION <i>(State and Discipline)</i> Licensed engineer in all 50 states.	
18. OTHER PROFESSIONAL QUALIFICATIONS <i>(Publications, Organizations, Training, Awards, etc.)</i> LEED Accredited Professional			

19. RELEVANT PROJECTS			
	(1) TITLE AND LOCATION <i>(City and State)</i>	(2) YEAR COMPLETED	
		PROFESSIONAL SERVICES	CONSTRUCTION <i>(If applicable)</i>
a.	Knute Nelson Grand Arbor (Alexandria, MN)	2015	2016
	(3) BRIEF DESCRIPTION <i>(Brief scope, size, cost, etc.)</i> AND SPECIFIC ROLE MEP Design for a 4-level, 190,000 sq. ft. senior living facility with 111 independent, assisted and memory care assisted living units. Included a 40,000 sq. ft. underground parking structure.		
b.	Mount Olivet Careview Home (Minneapolis, MN)	2016	2018
	(3) BRIEF DESCRIPTION <i>(Brief scope, size, cost, etc.)</i> AND SPECIFIC ROLE Mechanical Engineer for \$22.4M renovation and 5 story addition to an urban senior living facility with 153 beds to shift for a focus on privacy, rehabilitative care, memory care and therapy.		
c.	Grace Point Crossing (Cambridge, MN)	2016	2017
	(3) BRIEF DESCRIPTION <i>(Brief scope, size, cost, etc.)</i> AND SPECIFIC ROLE MEP design for a senior living facility consisting of 50-units of independent living with underground parking, 179 skilled nursing beds and a 23,000 sq. ft. town center with amenity spaces.		
d.	Primrose Retirement Villages (Multiple in AR, MI, WI)	2016	2017
	(3) BRIEF DESCRIPTION <i>(Brief scope, size, cost, etc.)</i> AND SPECIFIC ROLE Mechanical Engineer for new prototype design and site adaptation for 3 campuses that include \$12-17M senior housing facilities that included 70-95 units of independent, assisted and memory care assisted living for seniors. Sites also included senior rental villas and a clubhouse.		
e.	Grand Living Cedar Rapids (Cedar Rapids, IA)	2016	2017
	(3) BRIEF DESCRIPTION <i>(Brief scope, size, cost, etc.)</i> AND SPECIFIC ROLE MEP design for 164-unit, 4-story senior living facility with enclosed below grade parking and common amenity spaces.		

E. RESUMES OF KEY PERSONNEL PROPOSED FOR THIS CONTRACT

(Complete one Section E for each key person.)

12. NAME Steven Youngs, PE	13. ROLE IN THIS CONTRACT Electrical Engineer	14. YEARS EXPERIENCE	
		a. TOTAL 35	b. WITH CURRENT FIRM 25
15. FIRM NAME AND LOCATION <i>(City and State)</i> Steen Engineering (Crystal, MN)			
16. EDUCATION <i>(Degree and Specialization)</i> Bachelor of Electrical Engineering North Dakota State University		17. CURRENT PROFESSIONAL REGISTRATION <i>(State and Discipline)</i> Licensed Engineer in all 50 states	
18. OTHER PROFESSIONAL QUALIFICATIONS <i>(Publications, Organizations, Training, Awards, etc.)</i> Member of NCEES			

19. RELEVANT PROJECTS			
	(1) TITLE AND LOCATION <i>(City and State)</i>	(2) YEAR COMPLETED	
		PROFESSIONAL SERVICES	CONSTRUCTION <i>(If applicable)</i>
a.	Knute Nelson Grand Arbor (Alexandria, MN)	2015	
	(3) BRIEF DESCRIPTION <i>(Brief scope, size, cost, etc.)</i> AND SPECIFIC ROLE MPE design for a 4-level, 190,0000 square foot, 111 senior living unit facility with a 40,000 square feet of underground parking.		
b.	Mount Olivet Careview Home (Minneapolis, MN)	2016	2018
	(3) BRIEF DESCRIPTION <i>(Brief scope, size, cost, etc.)</i> AND SPECIFIC ROLE Electrical engineering of \$22.4M renovation and 5 story addition to an urban senior living facility with 153 beds to shift for a focus on privacy, rehabilitative care, memory care and therapy.		
c.	GracePoint Crossing (Cambridge, MN)	2016	
	(3) BRIEF DESCRIPTION <i>(Brief scope, size, cost, etc.)</i> AND SPECIFIC ROLE MEP design for a senior living facility consisting of 50-units of independent living with underground parking, 179-units of skilled care and a 23,000 square foot town center with amenity spaces.		
d.	Primrose Retirement Villages (Multiple in AR, MI, WI)	2016	2017
	(3) BRIEF DESCRIPTION <i>(Brief scope, size, cost, etc.)</i> AND SPECIFIC ROLE Electrical engineer for multiple campuses that include \$12-17M senior housing facilities that included 70-95 units of independent, assisted and memory care assisted living for seniors. Sites also included senior rental villas and a clubhouse.		
e.	Grand Living Cedar Rapids (Cedar Rapids, IA)	2016	2017
	(3) BRIEF DESCRIPTION <i>(Brief scope, size, cost, etc.)</i> AND SPECIFIC ROLE MEP design for 164-unit, 4-story senior living facility with enclosed below grade parking and common amenity spaces.		

E. RESUMES OF KEY PERSONNEL PROPOSED FOR THIS CONTRACT

(Complete one Section E for each key person.)

12. NAME Kesh Ramdular, PE	13. ROLE IN THIS CONTRACT Structural Engineer	14. YEARS EXPERIENCE	
		a. TOTAL 35	b. WITH CURRENT FIRM 28

15. FIRM NAME AND LOCATION *(City and State)*
Larson Engineering (Crystal, MN)

16. EDUCATION <i>(Degree and Specialization)</i> Bachelor of Science in Civil Engineering University of Minnesota Institute of Technology	17. CURRENT PROFESSIONAL REGISTRATION <i>(State and Discipline)</i> Licensed Engineer in 46 states and Puerto Rico.
---	--

18. OTHER PROFESSIONAL QUALIFICATIONS *(Publications, Organizations, Training, Awards, etc.)*
Consulting Engineers Council, Post Tensioning Institute, American Concrete Institute, American Institute of Steel Construction, American Society of Testing Materials.

19. RELEVANT PROJECTS

a.	(1) TITLE AND LOCATION <i>(City and State)</i> Comforts of Home (White Bear Lake, MN)	(2) YEAR COMPLETED	
		PROFESSIONAL SERVICES	CONSTRUCTION <i>(If applicable)</i>
	(3) BRIEF DESCRIPTION <i>(Brief scope, size, cost, etc.)</i> AND SPECIFIC ROLE Structural Engineer for \$7.5M assisted living complex. Building is two-story wood truss framed with below grade parking. Also features a memory care unit with separate dining and activity space.	<input checked="" type="checkbox"/> Check if project performed with current firm	

b.	(1) TITLE AND LOCATION <i>(City and State)</i> Mount Olivet Careview Home (Minneapolis, MN)	(2) YEAR COMPLETED	
		PROFESSIONAL SERVICES 2016	CONSTRUCTION <i>(If applicable)</i> 2018
	(3) BRIEF DESCRIPTION <i>(Brief scope, size, cost, etc.)</i> AND SPECIFIC ROLE Structural engineer for \$22.4M renovation and 5 story addition to an urban senior living facility with 153 beds to shift for a focus on privacy, rehabilitative care, memory care and therapy.	<input checked="" type="checkbox"/> Check if project performed with current firm	

c.	(1) TITLE AND LOCATION <i>(City and State)</i> Westwood Ridge (West Saint Paul, MN)	(2) YEAR COMPLETED	
		PROFESSIONAL SERVICES 2011	CONSTRUCTION <i>(If applicable)</i> 2012
	(3) BRIEF DESCRIPTION <i>(Brief scope, size, cost, etc.)</i> AND SPECIFIC ROLE Structural engineer for a new \$9.7M assisted living facility with 38 transitional care units, 24 memory care assisted living units plus 10 care suites. The facility included therapy program, medical clinic, restaurant and bistro style dining options, town hall space and various points of interest and activity.	<input checked="" type="checkbox"/> Check if project performed with current firm	

d.	(1) TITLE AND LOCATION <i>(City and State)</i> Primrose Retirement Villages (Multiple in AR, MI, WI)	(2) YEAR COMPLETED	
		PROFESSIONAL SERVICES 2016	CONSTRUCTION <i>(If applicable)</i> 2017
	(3) BRIEF DESCRIPTION <i>(Brief scope, size, cost, etc.)</i> AND SPECIFIC ROLE Structural engineer for new prototype design and 3 campuses that include \$12-17M senior housing facilities that included 70-95 units of independent, assisted and memory care assisted living for seniors. Sites also included senior rental villas and a clubhouse.	<input checked="" type="checkbox"/> Check if project performed with current firm	

e.	(1) TITLE AND LOCATION <i>(City and State)</i> Carty Heights (Saint Paul, MN)	(2) YEAR COMPLETED	
		PROFESSIONAL SERVICES	CONSTRUCTION <i>(If applicable)</i>
	(3) BRIEF DESCRIPTION <i>(Brief scope, size, cost, etc.)</i> AND SPECIFIC ROLE Structural Engineer for 76,000 square foot independent living facility featuring a four-story wood framed structure with below grade parking area and 49 one-bedroom apartments.	<input checked="" type="checkbox"/> Check if project performed with current firm	

F. EXAMPLE PROJECTS WHICH BEST ILLUSTRATE PROPOSED TEAM'S QUALIFICATIONS FOR THIS CONTRACT
(Present as many projects as requested by the agency, or 10 projects, if not specified. Complete one Section F for each project.)

20. EXAMPLE PROJECT KEY NUMBER
 1

21. TITLE AND LOCATION <i>(City and State)</i>	22. YEAR COMPLETED	
	PROFESSIONAL SERVICES 2004	CONSTRUCTION <i>(If applicable)</i> 2005

Primrose Retirement Village (Casper, WY)

23. PROJECT OWNER'S INFORMATION

a. PROJECT OWNER Primrose Management	b. POINT OF CONTACT NAME Kevin Espeland	c. POINT OF CONTACT TELEPHONE NUMBER (605) 725-3993
---	--	--

24. BRIEF DESCRIPTION OF PROJECT AND RELEVANCE TO THIS CONTRACT *(Include scope, size, and cost)*

Redefining the standards in senior living today, Primrose quickly became a preferred model of retirement housing design. Casper launched the Primrose prototype model which would be replicated and adapted to more than 20 Primrose campuses nationwide. This \$5.7M facility provided 32 units assisted living and 36 independent living units, plus a wide array of activities and lifestyle choices, including an English Pub style lounge with billiards, the social ice cream parlor, movie theatre, fitness room, intimate fireside lounge or the winding corridor that connects them all. Additional campus components include 2 bedroom / 2 bath senior rental villas.



25. FIRMS FROM SECTION C INVOLVED WITH THIS PROJECT

a.	(1) FIRM NAME WAI Continuum	(2) FIRM LOCATION <i>(City and State)</i> Saint Paul, MN	(3) ROLE Architect, Project Manager
b.	(1) FIRM NAME Steen Engineering	(2) FIRM LOCATION <i>(City and State)</i> Crystal, MN	(3) ROLE Mechanical, Electrical Engineer
c.	(1) FIRM NAME Larson Engineering	(2) FIRM LOCATION <i>(City and State)</i> White Bear Lake, MN	(3) ROLE Structural Engineer
d.	(1) FIRM NAME	(2) FIRM LOCATION <i>(City and State)</i>	(3) ROLE
e.	(1) FIRM NAME	(2) FIRM LOCATION <i>(City and State)</i>	(3) ROLE
f.	(1) FIRM NAME	(2) FIRM LOCATION <i>(City and State)</i>	(3) ROLE

F. EXAMPLE PROJECTS WHICH BEST ILLUSTRATE PROPOSED TEAM'S QUALIFICATIONS FOR THIS CONTRACT

(Present as many projects as requested by the agency, or 10 projects, if not specified. Complete one Section F for each project.)

20. EXAMPLE PROJECT KEY NUMBER
1

21. TITLE AND LOCATION <i>(City and State)</i>	22. YEAR COMPLETED	
	PROFESSIONAL SERVICES 2009	CONSTRUCTION <i>(If applicable)</i> 2010

Primrose Retirement Village (Gillette, WY)

23. PROJECT OWNER'S INFORMATION

a. PROJECT OWNER Primrose Management	b. POINT OF CONTACT NAME Kevin Espeland	c. POINT OF CONTACT TELEPHONE NUMBER (605) 725-3993
---	--	--

24. BRIEF DESCRIPTION OF PROJECT AND RELEVANCE TO THIS CONTRACT *(Include scope, size, and cost)*

The third Primrose Community development in the state of Wyoming, this new \$7.7 M independent living and assisted living facility offers a marketable community of studio, one and two bedroom units with a spacious winding corridor to connect public areas, including a wellness center, pub-style lounge with, billiards, movie theatre, ice cream parlor, beauty salon, cyber cafe, and chapel. The retirement community is 114,878 sq. ft., with a later phase adding senior rental villas to the site.



25. FIRMS FROM SECTION C INVOLVED WITH THIS PROJECT

a.	(1) FIRM NAME WAI Continuum	(2) FIRM LOCATION <i>(City and State)</i> Saint Paul, MN	(3) ROLE Architect, Project Manager
b.	(1) FIRM NAME Steen Engineering	(2) FIRM LOCATION <i>(City and State)</i> Crystal, MN	(3) ROLE Mechanical, Electrical Engineer
c.	(1) FIRM NAME Larson Engineering	(2) FIRM LOCATION <i>(City and State)</i> White Bear Lake, MN	(3) ROLE Structural Engineer
d.	(1) FIRM NAME	(2) FIRM LOCATION <i>(City and State)</i>	(3) ROLE
e.	(1) FIRM NAME	(2) FIRM LOCATION <i>(City and State)</i>	(3) ROLE
f.	(1) FIRM NAME	(2) FIRM LOCATION <i>(City and State)</i>	(3) ROLE

F. EXAMPLE PROJECTS WHICH BEST ILLUSTRATE PROPOSED TEAM'S QUALIFICATIONS FOR THIS CONTRACT
(Present as many projects as requested by the agency, or 10 projects, if not specified. Complete one Section F for each project.)

20. EXAMPLE PROJECT KEY NUMBER
2

21. TITLE AND LOCATION <i>(City and State)</i>	22. YEAR COMPLETED	
	PROFESSIONAL SERVICES 2012	CONSTRUCTION <i>(If applicable)</i> 2014

Primrose Retirement Village (Cheyenne, WY)

23. PROJECT OWNER'S INFORMATION

a. PROJECT OWNER Primrose Management	b. POINT OF CONTACT NAME Kevin Espeland	c. POINT OF CONTACT TELEPHONE NUMBER (605) 725-3993
---	--	--

24. BRIEF DESCRIPTION OF PROJECT AND RELEVANCE TO THIS CONTRACT *(Include scope, size, and cost)*

Primrose Retirement Community is a spacious 38 unit independent living and 40 unit assisted living facility. The 78 unit 2-floor wood frame construction offers modern amenities for seniors that include a wellness center, pub, billiards hall, chapel, movie theater, ice cream parlor, beauty salon, and cyber cafe. The retirement community is 130,047 sq. ft with construction costs of \$9M. A later phase added 8 senior luxury rental villas to the site.



25. FIRMS FROM SECTION C INVOLVED WITH THIS PROJECT

	(1) FIRM NAME	(2) FIRM LOCATION <i>(City and State)</i>	(3) ROLE
a.	WAI Continuum	Saint Paul, MN	Architect, Project Manager
b.	Steen Engineering	Crystal, MN	Mechanical, Electrical Engineer
c.	Larson Engineering	White Bear Lake, MN	Structural Engineer
d.			
e.			
f.			

F. EXAMPLE PROJECTS WHICH BEST ILLUSTRATE PROPOSED TEAM'S QUALIFICATIONS FOR THIS CONTRACT

(Present as many projects as requested by the agency, or 10 projects, if not specified. Complete one Section F for each project.)

20. EXAMPLE PROJECT KEY NUMBER
3

21. TITLE AND LOCATION <i>(City and State)</i>	22. YEAR COMPLETED	
	PROFESSIONAL SERVICES 2017	CONSTRUCTION <i>(If applicable)</i> 2018

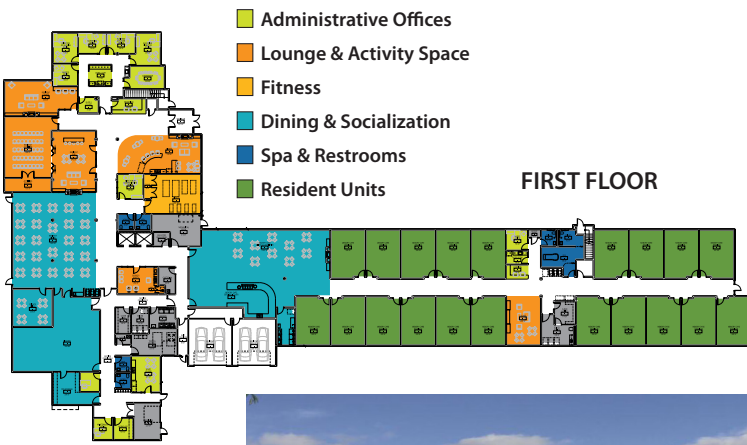
Harrison Bay Senior Living (Mound, MN)

23. PROJECT OWNER'S INFORMATION

a. PROJECT OWNER Trident Development	b. POINT OF CONTACT NAME Roger Fink	c. POINT OF CONTACT TELEPHONE NUMBER (320) 258-4438
---	--	--

24. BRIEF DESCRIPTION OF PROJECT AND RELEVANCE TO THIS CONTRACT *(Include scope, size, and cost)*

A new \$11M senior living facility featuring 52 assisted living units and 20 memory care assisted living units. The common areas are designed to support the senior's well-being and encourage social interaction with a sense of community. A variety of appealing amenities including a beverage bistro for casual conversation, community room for crafts & activities, a pub for socialization and games, fitness room, barber and beauty shop, exterior decks, spa-like bathing and community dining.



25. FIRMS FROM SECTION C INVOLVED WITH THIS PROJECT

	(1) FIRM NAME	(2) FIRM LOCATION <i>(City and State)</i>	(3) ROLE
a.	WAI Continuum	Saint Paul, MN	Architect, Project Manager
b.			
c.			
d.			
e.			
f.			

F. EXAMPLE PROJECTS WHICH BEST ILLUSTRATE PROPOSED TEAM'S QUALIFICATIONS FOR THIS CONTRACT
(Present as many projects as requested by the agency, or 10 projects, if not specified. Complete one Section F for each project.)

20. EXAMPLE PROJECT KEY NUMBER
4

21. TITLE AND LOCATION <i>(City and State)</i>	22. YEAR COMPLETED	
	PROFESSIONAL SERVICES 2011	CONSTRUCTION <i>(If applicable)</i> 2012

Westwood Ridge (West Saint Paul, MN)

23. PROJECT OWNER'S INFORMATION

a. PROJECT OWNER Walker Eldercare Services	b. POINT OF CONTACT NAME Greg Oppgaard	c. POINT OF CONTACT TELEPHONE NUMBER (612) 827-8355
--	--	---

24. BRIEF DESCRIPTION OF PROJECT AND RELEVANCE TO THIS CONTRACT *(Include scope, size, and cost)*

Looking to strengthen the market position of this existing senior living campus, a new assisted living facility was added whose programming concentrated on rehab care. The \$9.7M construction offered 38 transitional care units, 24 memory care assisted living units plus 10 care suites. The program integrated a comprehensive therapy and wellness program with a medical clinic, restaurant and bistro style dining options, town hall space and various points of interest and activity.



25. FIRMS FROM SECTION C INVOLVED WITH THIS PROJECT

(1) FIRM NAME	(2) FIRM LOCATION <i>(City and State)</i>	(3) ROLE
a. WAI Continuum	Saint Paul, MN	Architect, Project Manager
b. Larson Engineering	White Bear Lake, MN	Structural Engineer
c.		
d.		
e.		
f.		

F. EXAMPLE PROJECTS WHICH BEST ILLUSTRATE PROPOSED TEAM'S QUALIFICATIONS FOR THIS CONTRACT
(Present as many projects as requested by the agency, or 10 projects, if not specified. Complete one Section F for each project.)

20. EXAMPLE PROJECT KEY NUMBER
5

21. TITLE AND LOCATION <i>(City and State)</i>	22. YEAR COMPLETED	
	PROFESSIONAL SERVICES 2007	CONSTRUCTION <i>(If applicable)</i> 2008

Crystal Seasons Senior Living (Lake Crystal, MN)

23. PROJECT OWNER'S INFORMATION

a. PROJECT OWNER Thro Company	b. POINT OF CONTACT NAME Chris Thro (retired)	c. POINT OF CONTACT TELEPHONE NUMBER (507) 625-8741
----------------------------------	--	--

24. BRIEF DESCRIPTION OF PROJECT AND RELEVANCE TO THIS CONTRACT *(Include scope, size, and cost)*

The new \$5.5 M facility offers 24 units of senior independent living, 22 assisted living and 8 memory care assisted living units. The forward thinking program is designed to a higher code compliance to provide for a high acuity of assisted living services with opportunity to convert to nursing care in some areas. The rich decor and structured interior is dynamic with numerous points of interest and activity for residents including a drop in cafe with personal liquor cabinets, beauty shop, spacious living room parlor, and winding corridors with art glass accented windows. The residential units are elegantly designed with sculpted archways, recess wall arches, breakfast serving counters, senior friendly appliances and spacious floor plans.



25. FIRMS FROM SECTION C INVOLVED WITH THIS PROJECT

	(1) FIRM NAME	(2) FIRM LOCATION <i>(City and State)</i>	(3) ROLE
a.	WAI Continuum	Saint Paul, MN	Architect, Project Manager
b.	Steen Engineering	Crystal, MN	Mechanical, Electrical Engineer
c.	Larson Engineering	White Bear Lake, MN	Structural Engineer
d.			
e.			
f.			

F. EXAMPLE PROJECTS WHICH BEST ILLUSTRATE PROPOSED TEAM'S QUALIFICATIONS FOR THIS CONTRACT
(Present as many projects as requested by the agency, or 10 projects, if not specified. Complete one Section F for each project.)

20. EXAMPLE PROJECT KEY NUMBER
 6

21. TITLE AND LOCATION <i>(City and State)</i>	22. YEAR COMPLETED	
	PROFESSIONAL SERVICES 2016	CONSTRUCTION <i>(If applicable)</i> 2017

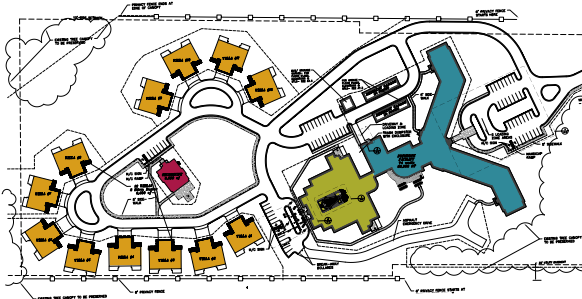
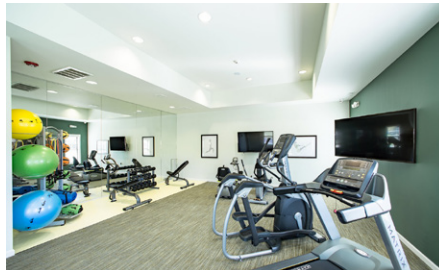
Primrose Retirement Village (Rogers, AR)

23. PROJECT OWNER'S INFORMATION

a. PROJECT OWNER Primrose Management	b. POINT OF CONTACT NAME Kevin Espeland	c. POINT OF CONTACT TELEPHONE NUMBER (605) 725-3993
---	--	--

24. BRIEF DESCRIPTION OF PROJECT AND RELEVANCE TO THIS CONTRACT *(Include scope, size, and cost)*

After completion of 20+ senior living campuses nationwide from the Primrose Prototype I, it was time to evolve the master design to address changing demographic demands, growth and market opportunities. This site was the first construction of the new prototype which expanded the facility to a third floor to accommodate more units where needed, a new component for memory care assisted living, a clubhouse component for the senior rental villa community and an updated interior program layout. Primrose continues to be a leading edge design that is frequently referenced by others in the industry as a go to model of success. This \$17M project included 24 independent living units, 50 assisted living units, 24 memory care assisted living units, 24 senior rental villas and a clubhouse.



- Assisted & Independent Living
- Memory Care Assisted Living
- Villa Townhomes
- Clubhouse



25. FIRMS FROM SECTION C INVOLVED WITH THIS PROJECT

(1) FIRM NAME	(2) FIRM LOCATION <i>(City and State)</i>	(3) ROLE
a. WAI Continuum	Saint Paul, MN	Architect, Project Manager
b. Steen Engineering	Crystal, MN	Mechanical, Electrical Engineer
c. Larson Engineering	White Bear Lake, MN	Structural Engineer
d.		
e.		
f.		

F. EXAMPLE PROJECTS WHICH BEST ILLUSTRATE PROPOSED TEAM'S QUALIFICATIONS FOR THIS CONTRACT
(Present as many projects as requested by the agency, or 10 projects, if not specified. Complete one Section F for each project.)

20. EXAMPLE PROJECT KEY NUMBER
7

21. TITLE AND LOCATION <i>(City and State)</i>	22. YEAR COMPLETED	
	PROFESSIONAL SERVICES 2010	CONSTRUCTION <i>(if applicable)</i> 2012

Trailside Senior Living (Forest Lake, MN)

23. PROJECT OWNER'S INFORMATION

a. PROJECT OWNER Washington County HRA	b. POINT OF CONTACT NAME Barbara Dacy	c. POINT OF CONTACT TELEPHONE NUMBER (651) 458-6556
---	--	--

24. BRIEF DESCRIPTION OF PROJECT AND RELEVANCE TO THIS CONTRACT *(Include scope, size, and cost)*

Recognizing the growing need for affordable housing solutions dedicated to aging seniors, the Washington County HRA developing a new \$7.2M 70-unit affordable housing project in conjunction with a future planned adjacent continuing care retirement community. The warm, inviting decor features numerous design enhancements not commonly found in affordable housing, with vaulted dining space, fireplaces, wood accent details and multiple common areas for activities. There is also a small commercial kitchen for special event use. Trailside Senior Living was awarded "Property Excellence-Best New Development-Affordable Housing" at the 2012 MADACS Awards.



25. FIRMS FROM SECTION C INVOLVED WITH THIS PROJECT

	(1) FIRM NAME	(2) FIRM LOCATION <i>(City and State)</i>	(3) ROLE
a.	WAI Continuum	Saint Paul, MN	Architect, Project Manager
b.	Steen Engineering	Crystal, MN	Mechanical, Electrical Engineer
c.			
d.			
e.			
f.			

F. EXAMPLE PROJECTS WHICH BEST ILLUSTRATE PROPOSED TEAM'S QUALIFICATIONS FOR THIS CONTRACT

(Present as many projects as requested by the agency, or 10 projects, if not specified. Complete one Section F for each project.)

20. EXAMPLE PROJECT KEY NUMBER
8

21. TITLE AND LOCATION <i>(City and State)</i>	22. YEAR COMPLETED	
	PROFESSIONAL SERVICES 2006	CONSTRUCTION <i>(If applicable)</i> 2007

Park Terrace Senior Living (Buffalo, MN)

23. PROJECT OWNER'S INFORMATION

a. PROJECT OWNER Primrose Management	b. POINT OF CONTACT NAME Ron Sanford	c. POINT OF CONTACT TELEPHONE NUMBER (952) 259-4500
---	---	--

24. BRIEF DESCRIPTION OF PROJECT AND RELEVANCE TO THIS CONTRACT *(Include scope, size, and cost)*

In the latest contribution to an existing senior care campus, a new \$4.8M senior housing facility was constructed to serve the assisted living needs of the small rural community. The new facility offers 48 assisted living units, a ministry center to serve the whole campus and an adult day care program for the community. There is also planning for 60 independent living units for future phasing. The finished design maximizes the natural landscape and lake views for its residential units, while orientation to allow residents to easily access other wellness, therapy and activity programs within the campus.



25. FIRMS FROM SECTION C INVOLVED WITH THIS PROJECT

	(1) FIRM NAME	(2) FIRM LOCATION <i>(City and State)</i>	(3) ROLE
a.	WAI Continuum	Saint Paul, MN	Architect, Project Manager
b.	Steen Engineering	Crystal, MN	Mechanical, Electrical Engineer
c.	Larson Engineering	White Bear Lake, MN	Structural Engineer
d.			
e.			
f.			

F. EXAMPLE PROJECTS WHICH BEST ILLUSTRATE PROPOSED TEAM'S QUALIFICATIONS FOR THIS CONTRACT
(Present as many projects as requested by the agency, or 10 projects, if not specified. Complete one Section F for each project.)

20. EXAMPLE PROJECT KEY NUMBER
9

21. TITLE AND LOCATION <i>(City and State)</i>	22. YEAR COMPLETED	
	PROFESSIONAL SERVICES 2007	CONSTRUCTION <i>(If applicable)</i> 2008

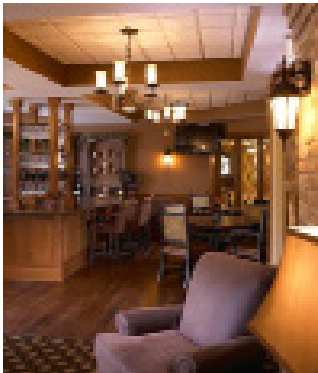
Kingsway Retirement Village (Belle Plaine, MN)

23. PROJECT OWNER'S INFORMATION

a. PROJECT OWNER Lutheran Home Association	b. POINT OF CONTACT NAME Jim Selvy	c. POINT OF CONTACT TELEPHONE NUMBER (952) 873-4741
---	---------------------------------------	--

24. BRIEF DESCRIPTION OF PROJECT AND RELEVANCE TO THIS CONTRACT *(Include scope, size, and cost)*

Part of a larger continuing care campus, the new \$12.5M senior living facility focused greatly on the culture and heritage of this small German community while also adopting programming that would serve the larger community - including restaurant style dining, therapy and convenience services. Residents delight in catching a game in Ratzkeller pub, dinner in the restaurant, a walk through the art gallery, or quiet conversation in the fireside lounge. The facility offers 45 independent living, 22 assisted living and 14 memory care assisted living units.



25. FIRMS FROM SECTION C INVOLVED WITH THIS PROJECT

	(1) FIRM NAME	(2) FIRM LOCATION <i>(City and State)</i>	(3) ROLE
a.	WAI Continuum	Saint Paul, MN	Architect, Project Manager
b.	Steen Engineering	Crystal, MN	Mechanical, Electrical Engineer
c.	Larson Engineering	White Bear Lake, MN	Structural Engineer
d.			
e.			
f.			

F. EXAMPLE PROJECTS WHICH BEST ILLUSTRATE PROPOSED TEAM'S QUALIFICATIONS FOR THIS CONTRACT
(Present as many projects as requested by the agency, or 10 projects, if not specified. Complete one Section F for each project.)

20. EXAMPLE PROJECT KEY NUMBER
 10

21. TITLE AND LOCATION <i>(City and State)</i>	22. YEAR COMPLETED	
	PROFESSIONAL SERVICES 2009	CONSTRUCTION <i>(if applicable)</i> 2010

The Crossings at University Park (Roanoke, VA)

23. PROJECT OWNER'S INFORMATION

a. PROJECT OWNER Smith/Packett	b. POINT OF CONTACT NAME Bruce Hedrick	c. POINT OF CONTACT TELEPHONE NUMBER (540) 774-7762
-----------------------------------	---	--

24. BRIEF DESCRIPTION OF PROJECT AND RELEVANCE TO THIS CONTRACT *(Include scope, size, and cost)*

Looking to expand the housing and care options of its campus, this Virginia provider added a new \$9.3M (102 unit) assisted living facility with a specialized program serving memory care residents. This engaging new living environment rich in southern character offers residents numerous points of interest and activity, including a theatre, pub, library, cafe, beauty salon, lounges, activity and dining spaces.



25. FIRMS FROM SECTION C INVOLVED WITH THIS PROJECT

	(1) FIRM NAME	(2) FIRM LOCATION <i>(City and State)</i>	(3) ROLE
a.	WAI Continuum	Saint Paul, MN	Architect, Project Manager
b.	Steen Engineering	Crystal, MN	Mechanical, Electrical Engineer
c.			
d.			
e.			
f.			

H. ADDITIONAL INFORMATION

30. PROVIDE ANY ADDITIONAL INFORMATION REQUESTED BY THE AGENCY. ATTACH ADDITIONAL SHEETS AS NEEDED.

1. Respondent firm's legal name, mailing address, email address and telephone numbers.
WAI Continuum
381 East Kellogg Boulevard | Saint Paul, MN 55101
General email: info@waicontinuum.com | Sean Bujold email: seanb@waicontinuum.com
Main: (651) 227-0644 | Sean Bujold direct: (651) 336-6336

2. The name, title and contact information of the person responsible for the submission.
Project Leader: Sean Bujold, Architectural Department Lead
seanb@waicontinuum.com | (651) 366-6336
Preparer: Christine Zrust, Marketing Coordinator
christinaz@waicontinuum.com | (651) 366-6331

3. Personnel to be assigned to the project and qualifications.
See previous Section E - Resumes of Key Personnel

4. The organization's history and mission, including number of years in business and legal structure.
WAI Continuum is a corporation founded in 1981.
In 2016, WAI was acquired by Lightowler Johnson & Associates, a corporation founded in 1954.
Both maintain separate structures, but close working relationships and shared personnel.
For further information on our history, mission and experience, see Appendix.

5. Associated firm(s) name, business address and telephone numbers.
See previous Section C - Proposed Team.

6. Provide experience with elder care facilities.
See previous Section F - Example Projects, as well as Appendix, Page 7+

7. Provide experience integrating state-of-the-art technology with elder care facilities.
See Appendix, Page 7

8. Similar projects indicating references and contact information.
See previous Section F - Example Projects, as well as Appendix.

9. Present volume of work and anticipated completion dates.
See Appendix, Page 5

10. Firm must have proof of liability insurance.
See next page.

11. Provide hourly rates charged at various work levels, including hourly rates of all associated firms.
See Appendix, Page 6

12. Provide a complete list of services offered by firm, as well as those of all associated firms.
See Appendix, Page 4

I. AUTHORIZED REPRESENTATIVE

The foregoing is a statement of facts.

31. SIGNATURE



32. DATE

October 11, 2018

33. NAME AND TITLE

Nate Anderson, Vice President



LIGHJOH-01

CBENSE

CERTIFICATE OF LIABILITY INSURANCE

DATE (MM/DD/YYYY)

08/27/2018

THIS CERTIFICATE IS ISSUED AS A MATTER OF INFORMATION ONLY AND CONFERS NO RIGHTS UPON THE CERTIFICATE HOLDER. THIS CERTIFICATE DOES NOT AFFIRMATIVELY OR NEGATIVELY AMEND, EXTEND OR ALTER THE COVERAGE AFFORDED BY THE POLICIES BELOW. THIS CERTIFICATE OF INSURANCE DOES NOT CONSTITUTE A CONTRACT BETWEEN THE ISSUING INSURER(S), AUTHORIZED REPRESENTATIVE OR PRODUCER, AND THE CERTIFICATE HOLDER.

IMPORTANT: If the certificate holder is an ADDITIONAL INSURED, the policy(ies) must have ADDITIONAL INSURED provisions or be endorsed. If SUBROGATION IS WAIVED, subject to the terms and conditions of the policy, certain policies may require an endorsement. A statement on this certificate does not confer rights to the certificate holder in lieu of such endorsement(s).

PRODUCER Warner and Company 318 Broadway N PO Box 1470 Fargo, ND 58107	CONTACT NAME: Connie Gunderson PHONE (A/C, No, Ext): _____ FAX (A/C, No): _____ E-MAIL ADDRESS: cgunderson@warnerandcompany.com
INSURER(S) AFFORDING COVERAGE	
INSURED	NAIC #
WAI Continuum, Inc. PO Box 2464 Fargo, ND 58108	INSURER A: Acuity, A Mutual Insurance Company 14184 INSURER B: _____ INSURER C: _____ INSURER D: _____ INSURER E: _____ INSURER F: _____

COVERAGES**CERTIFICATE NUMBER:****REVISION NUMBER:**

THIS IS TO CERTIFY THAT THE POLICIES OF INSURANCE LISTED BELOW HAVE BEEN ISSUED TO THE INSURED NAMED ABOVE FOR THE POLICY PERIOD INDICATED. NOTWITHSTANDING ANY REQUIREMENT, TERM OR CONDITION OF ANY CONTRACT OR OTHER DOCUMENT WITH RESPECT TO WHICH THIS CERTIFICATE MAY BE ISSUED OR MAY PERTAIN, THE INSURANCE AFFORDED BY THE POLICIES DESCRIBED HEREIN IS SUBJECT TO ALL THE TERMS, EXCLUSIONS AND CONDITIONS OF SUCH POLICIES. LIMITS SHOWN MAY HAVE BEEN REDUCED BY PAID CLAIMS.

INSR LTR	TYPE OF INSURANCE	ADDL INSD	SUBR WVD	POLICY NUMBER	POLICY EFF (MM/DD/YYYY)	POLICY EXP (MM/DD/YYYY)	LIMITS
A	<input checked="" type="checkbox"/> COMMERCIAL GENERAL LIABILITY <input type="checkbox"/> CLAIMS-MADE <input checked="" type="checkbox"/> OCCUR GEN'L AGGREGATE LIMIT APPLIES PER: <input type="checkbox"/> POLICY <input checked="" type="checkbox"/> PROJECT <input checked="" type="checkbox"/> LOC OTHER: _____			Z97559	04/01/2018	04/01/2019	EACH OCCURRENCE \$ 1,000,000 DAMAGE TO RENTED PREMISES (Ea occurrence) \$ 300,000 MED EXP (Any one person) \$ 10,000 PERSONAL & ADV INJURY \$ 1,000,000 GENERAL AGGREGATE \$ 3,000,000 PRODUCTS - COMP/OP AGG \$ 3,000,000 _____ \$ _____
A	<input checked="" type="checkbox"/> AUTOMOBILE LIABILITY <input checked="" type="checkbox"/> ANY AUTO OWNED AUTOS ONLY <input type="checkbox"/> SCHEDULED AUTOS <input type="checkbox"/> HIRED AUTOS ONLY <input type="checkbox"/> NON-OWNED AUTOS ONLY			Z97559	04/01/2018	04/01/2019	COMBINED SINGLE LIMIT (Ea accident) \$ 1,000,000 BODILY INJURY (Per person) \$ _____ BODILY INJURY (Per accident) \$ _____ PROPERTY DAMAGE (Per accident) \$ _____ _____ \$ _____
A	<input checked="" type="checkbox"/> UMBRELLA LIAB <input checked="" type="checkbox"/> OCCUR <input type="checkbox"/> EXCESS LIAB <input type="checkbox"/> CLAIMS-MADE DED _____ RETENTION \$ _____			Z97559	04/01/2018	04/01/2019	EACH OCCURRENCE \$ 6,000,000 AGGREGATE \$ 6,000,000 _____ \$ _____
A	WORKERS COMPENSATION AND EMPLOYERS' LIABILITY ANY PROPRIETOR/PARTNER/EXECUTIVE OFFICER/MEMBER EXCLUDED? (Mandatory in NH) <input type="checkbox"/> Y / N If yes, describe under DESCRIPTION OF OPERATIONS below		N/A	Z97559	04/01/2018	04/01/2019	<input checked="" type="checkbox"/> PER STATUTE <input type="checkbox"/> OTHER E.L. EACH ACCIDENT \$ 500,000 E.L. DISEASE - EA EMPLOYEE \$ 500,000 E.L. DISEASE - POLICY LIMIT \$ 500,000
A	Stop Gap			Z97559	04/01/2018	04/01/2019	Employers Liab. 1,000,000
A	Business Auto			Z97559	04/01/2018	04/01/2019	Collision Ded. 500

DESCRIPTION OF OPERATIONS / LOCATIONS / VEHICLES (ACORD 101, Additional Remarks Schedule, may be attached if more space is required)

CERTIFICATE HOLDER**CANCELLATION**

SHOULD ANY OF THE ABOVE DESCRIBED POLICIES BE CANCELLED BEFORE THE EXPIRATION DATE THEREOF, NOTICE WILL BE DELIVERED IN ACCORDANCE WITH THE POLICY PROVISIONS.

AUTHORIZED REPRESENTATIVE

ARCHITECT-ENGINEER QUALIFICATIONS

1. SOLICITATION NUMBER (If any)

PART II - GENERAL QUALIFICATIONS

(If a firm has branch offices, complete for each specific branch office seeking work.)

2a. FIRM (or Branch Office) NAME WAI Continuum (an LJA Company)			3. YEAR ESTABLISHED 1981 (WAI) 1954 (LJA)		4. UNIQUE ENTITY IDENTIFIER 05-904-3612 (LJA)	
2b. STREET 381 East Kellogg Boulevard			5. OWNERSHIP			
2c. CITY Saint Paul			2d. STATE MN	2e. ZIP CODE 55337		
6a. POINT OF CONTACT NAME AND TITLE Nate Anderson, Vice President			a. TYPE Corporation			
6b. TELEPHONE NUMBER (701) 551-2161			6c. E-MAIL ADDRESS nanderson@lja-1.com			b. SMALL BUSINESS STATUS
			7. NAME OF FIRM (If Block 2a is a Branch Office) Lightowler Johnson & Associates, Inc. (LJA)			
8a. FORMER FIRM NAME(S) (If any)			8b. YEAR ESTABLISHED		8c. UNIQUE ENTITY IDENTIFIER	

9. EMPLOYEES BY DISCIPLINE				10. PROFILE OF FIRM'S EXPERIENCE AND ANNUAL AVERAGE REVENUE FOR LAST 5 YEARS		
a. Function Code	b. Discipline	c. Number of Employees		a. Profile Code	b. Experience	c. Revenue Index Number (see below)
		(1) FIRM	(2) BRANCH			
02	Administrative	4	3	B01	Barracks/Dormitories	2
06	Architect	6	2	C10	Commercial Buildings/ Low Rise	2
08	CAD Technician	5	2	C15	Construction management	1
12	Civil Engineer	2		D07	Dining Halls / Clubs / Restaurants	2
21	Electrical Engineer	2		E02	Educational Facilities / Classrooms	1
38	Land surveyor	4		E07	Energy Conservation / New	1
42	Mechanical Engineer	1		F02	Field House, Gyms, Stadiums	1
57	Structural Engineer	1		F03	Fire Protection	1
				G01	Garages, Vehicle Maint. Facilities	1
				H04	Heating, Ventilation and AC	3
				H07	Highways, Streets, Parking Lots	3
				H10	Hotels / Motels	4
				H11	Housing	5
				I01	Industrial Buildings, Manufact.	3
				L05	Lighting Interior	2
				L06	Lighting Exterior	1
				M08	Modular Systems	2
				O01	Office Buildings / Industrial Parks	2
				P06	Planning (Site)	3
				P12	Power Generation	1
				R04	Recreational Facilities	1
				R12	Roofing	1
				S10	Surveying	2
				S09	Structural Design	1
				S12	Swimming Pools	1
	Other Employees			T04	Topographic Survey & Mapping	1
Total		25	7			

<p>11. ANNUAL AVERAGE PROFESSIONAL SERVICES REVENUES OF FIRM FOR LAST 3 YEARS (Insert revenue index number shown at right)</p> <table style="width: 100%;"> <tr><td>a. Federal Work</td><td style="text-align: center;">1</td></tr> <tr><td>b. Non-Federal Work</td><td style="text-align: center;">6</td></tr> <tr><td>c. Total Work</td><td style="text-align: center;">6</td></tr> </table>	a. Federal Work	1	b. Non-Federal Work	6	c. Total Work	6	<p style="text-align: center;">PROFESSIONAL SERVICES REVENUE INDEX NUMBER</p> <table style="width: 100%;"> <tr> <td>1. Less than \$100,000</td> <td>6. \$2 million to less than \$5 million</td> </tr> <tr> <td>2. \$100,000 to less than \$250,000</td> <td>7. \$5 million to less than \$10 million</td> </tr> <tr> <td>3. \$250,000 to less than \$500,000</td> <td>8. \$10 million to less than \$25 million</td> </tr> <tr> <td>4. \$500,000 to less than \$1 million</td> <td>9. \$25 million to less than \$50 million</td> </tr> <tr> <td>5. \$1 million to less than \$2 million</td> <td>10. \$50 million or greater</td> </tr> </table>	1. Less than \$100,000	6. \$2 million to less than \$5 million	2. \$100,000 to less than \$250,000	7. \$5 million to less than \$10 million	3. \$250,000 to less than \$500,000	8. \$10 million to less than \$25 million	4. \$500,000 to less than \$1 million	9. \$25 million to less than \$50 million	5. \$1 million to less than \$2 million	10. \$50 million or greater
a. Federal Work	1																
b. Non-Federal Work	6																
c. Total Work	6																
1. Less than \$100,000	6. \$2 million to less than \$5 million																
2. \$100,000 to less than \$250,000	7. \$5 million to less than \$10 million																
3. \$250,000 to less than \$500,000	8. \$10 million to less than \$25 million																
4. \$500,000 to less than \$1 million	9. \$25 million to less than \$50 million																
5. \$1 million to less than \$2 million	10. \$50 million or greater																

12. AUTHORIZED REPRESENTATIVE
The foregoing is a statement of facts.

a. SIGNATURE 	b. DATE October 11, 2018
c. NAME AND TITLE Nathan Anderson, PLS - Vice President	